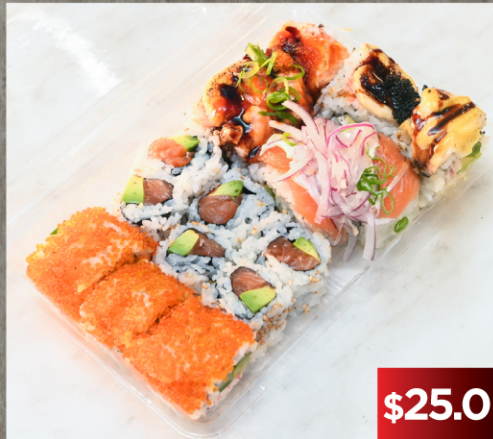


# SUSHI MUSA TAKE AWAY MENU



## BENTO BOX



\$25.0

### Deluxe Seafood Box

California (3pcs), Pink Panther (2pcs), Lion King (3pcs), Salmon Onion (2pcs), Salmon Avo (6pcs)



\$21.5

### Special Box

Leo (6pcs), Tiger (6pcs), Double Cheese Chicken (6pcs)



\$20.5

### Chicken and Prawn Lovers

Chuchu Train (4pcs), Tiger (6pcs), Dragon Fly (4pcs)



\$18.5

### Assorted Box

Snowy Chicken (6pcs), Tiger (6pcs), Crunch (3pcs)



\$19.5

### Chicken Lovers

Leo (6pcs), Tiger (6pcs), Chicken Avo (6pcs)



\$18.5

### Chicken Box without Cheese

Chicken and Lettuce (2pcs), Corn Crunch (2pcs), Red Hen (4pcs), Teriyaki Chicken (2pcs)



\$13.5

### Vegetarian Lovers VG

Vegetarian Inari (2pcs), Asparagus Avo (6pcs), Cucumber Avo (6pcs)



\$29.5

### Gourmet Salmon Lovers

Salmon Nigiri (2pcs), Salmon Avo Nigiri (2pcs), Volcano (2pcs), Double Cheese Salmon (4pcs), Baby Salmon (6pcs)



\$19.5

### Avocado Lovers

Tuna Avo (6pcs), Salmon Avo (6pcs), Chicken Avo (6pcs), Baby Avo (6pcs)



\$12.0

### Baby Roll Mixed Box

Baby Avo (6pcs), Baby Tuna (6pcs), Baby Cucumber (6pcs)



\$12.5

### Mixed Ships Box

Orange Tobiko (3pcs), Seaweed Salad (3pcs)

## DEEP FRIES



\$10.5

### Takoyaki And Crab Claw

Takoyaki (4pcs), Crab Claw (2pcs)



\$17.5

### Mixed Set

Calamari Ring (4pcs), Spring Roll (2pcs), Prawn Parcel (3pcs), Creamy Croquette (2pcs)

## SASHIMI



\$18.5

### Salmon Sashimi GF

Salmon Sashimi (8pcs)

VG Vegetarian GF Gluten-Free

\* All sets come with complimentary soy sauce and wasabi



# SUSHI MUSA TAKE AWAY MENU

## NIGIRI BOX



**Deep Fries Nigiri Box**  
Vegetables (4pcs), Panko (2pcs),  
Cheese Panko (2pcs)



**Salmon Nigiri Box** GF  
Salmon Nigiri (6pcs)

## EXTRA



**Edamame** VG



**Grilled Deluxe Nigiri Box**  
Eel (2pcs), Cheese Panko (2pcs),  
Seared Hotate (2pcs),  
Grilled Sake (2pcs), Cheese Ebi (2pcs)



**Mixed Nigiri Box**  
Sake (2pcs), Cooked Ebi (2pcs),  
Azikan (2pcs), Tamago (2pcs),  
Ika (2pcs)

## A LA CARTE



**Chicken Katsu Donburi with Miso**



**Chilli Prawns (7pcs) with vegetables**



**Salmon Teriyaki Donburi with Miso**



**Chef's Special BBQ King Prawns (5pcs)**



**Chicken Teriyaki Donburi with Miso**



**Chef's Special BBQ King Prawns (3pcs)**



**Chicken Karage with vegetables**

## DRINKS

- Water
- Coke (300ml)
- Coke Zero (300ml)
- Lipton Ice Tea
- Joe's Classic Orange Juice (350ml)

- \$3 • Joe's Classic Apple Juice (350ml)
- \$4 • Sunkist (600ml)
- \$4 • Solo (600ml)
- \$4 • Mountain Dew (600ml)

Miso Soup	\$2.0	Mayonnaise	\$0.2
Green Tea	\$2.0	Ginger	\$0.2
Rice	\$2.0	Wasabi	\$0.2
Soy sauce	\$0.2	Mustard	\$0.2

VG Vegetarian GF Gluten-Free

\* All sets come with complimentary soy sauce and wasabi